

PART 1 - ADDENDUM

1.1 TITLE

- .1 This Addendum shall be known as:

Addendum 2
TFM-032-26 MU-502-25 EDO 0844 Cylinder Replacement & Modernization

- .2 The Date of the Addendum is Tuesday, May 05, 2026

1.2 PRECEDENCE

- .1 This amendment to the bid documents is effective immediately.
- .2 This Addendum shall form an integral part of the original bid documents and is to be read in conjunction therewith.
- .3 The Addendum shall take precedence over previously issued bid documents with which it may prove to be at variance.

1.3 GENERAL

- .1 The General Conditions shall govern all phases of the Work covered by this Addendum.
- .2 Acknowledge receipt of this addendum in the Tender and Acceptance form.

1.4 PURPOSE

- .1 The purpose of the Addendum is to inform bidders of the changes, deletions and additions to be added to the bid documents.

1.5 CHANGES TO DRAWINGS

- .1 Add drawing BPM-40371 Details
- .2 Add drawing DRWG NO 14b-2123 Single Section Jack Assembly
- .3 Add drawing 14B-5632 Platform Welded Sub Assembly
- .4 Add drawing 14B-5631 Sling Welded Assembly
- .5 Add drawing 84329 Channel Platform Stringer
- .6 Add drawing 84328 Channel Platform (at sill) Stringer
- .7 Add drawing 84323 Angle Platform Side Stringer]
- .8 Add drawing 84293 Crosshead Formed
- .9 Add drawing 84299 Beam Formed Plate
- .10 Add drawing 84287 Stile Formed

1.6 CHANGES TO SPECIFICATION

- .1 Remove existing 00 01 10 Table of Contents
- .2 Replace with attached 00 01 10 Table of Contents

- .3 Add attached 00 01 15 List of Drawings
- .4 Remove existing Appendix A cover page (pg. 29)
- .5 Replace with attached Appendix A cover page. Note: all existing specifications to remain.
- .6 Add attached Appendix A Drawings

END OF ADDENDUM

PROCUREMENT AND CONTRACTING DOCUMENTS GROUP

DIVISION 00 - PROCUREMENT AND CONTRACTING REQUIREMENTS

Open Call for Bids – Cover Sheet 1
Request for Open Call for Bids (OCB) Information Sheet 1
About Memorial University 1
[00 01 10](#) Table of Contents Stipulated Price Contract 2
[00 01 15](#) List of Drawings 1

Open Call for Bids Strategic Procurement Sections

Part 1 – Submission Instructions 3
Part 2 – Evaluation and Award 2
Part 3 – Terms and Conditions of the OCB Process 7
Part 4 – Environmental Health and Safety Requirements 6
Part 5 – General Conditions 1
Part 6 – Supplementary Terms and Conditions 2

Appendix A – Specifications and Drawings 1
Appendix B – Submission Form 3
Appendix C1 – Pricing Form 1
Appendix D – List of Subcontractors 1

General Conditions and Agreement between Owner and Contractor for the Stipulated Price Contract

Index 2
General Conditions 36
Supplementary General Conditions 2
Special Conditions 9
Campus Safety and Health Regulations 4
Contractor Performance Evaluation 3

SPECIFICATIONS GROUP

SPECIFICATION 01 – ELEVATOR CYLINDER REPLACEMENT30
SPECIFICATION 02 – ELEVATOR MODERNIZATION78
SPECIFICATION 03 – EXISTING ELEVATOR DRAWINGS10

END OF SECTION

PART 1 - GENERAL

1.1 DRAWINGS – ELEVATOR

- .1 BPM-40371 Details
- .2 DRWG NO 14b-2123 Single Section Jack Assembly
- .3 14B-5632 Platform Welded Sub Assembly
- .4 14B-5631 Sling Welded Assembly
- .5 84329 Channel Platform Stringer
- .6 84328 Channel Platform (at sill) Stringer
- .7 84323 Angle Platform Side Stringer]
- .8 84293 Crosshead Formed
- .9 84299 Beam Formed Plate
- .10 84287 Stile Formed

END OF SECTION

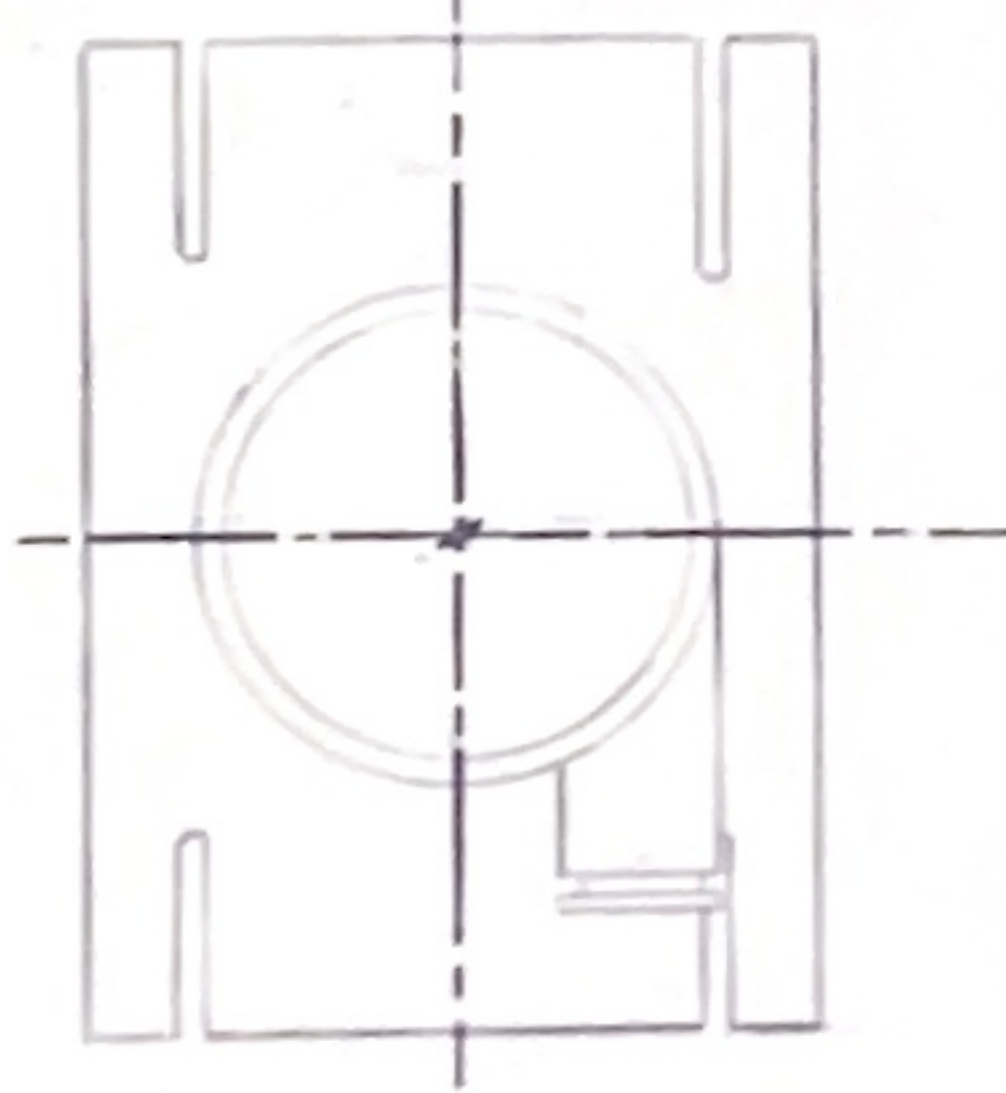
APPENDIX A – SPECIFICATIONS AND DRAWINGS

**SPECIFICATIONS AND DRAWINGS
LOCATED AT THE END OF THIS DOCUMENT**

APPENDIX A
SPECIFICATION 03

JOB No BP-

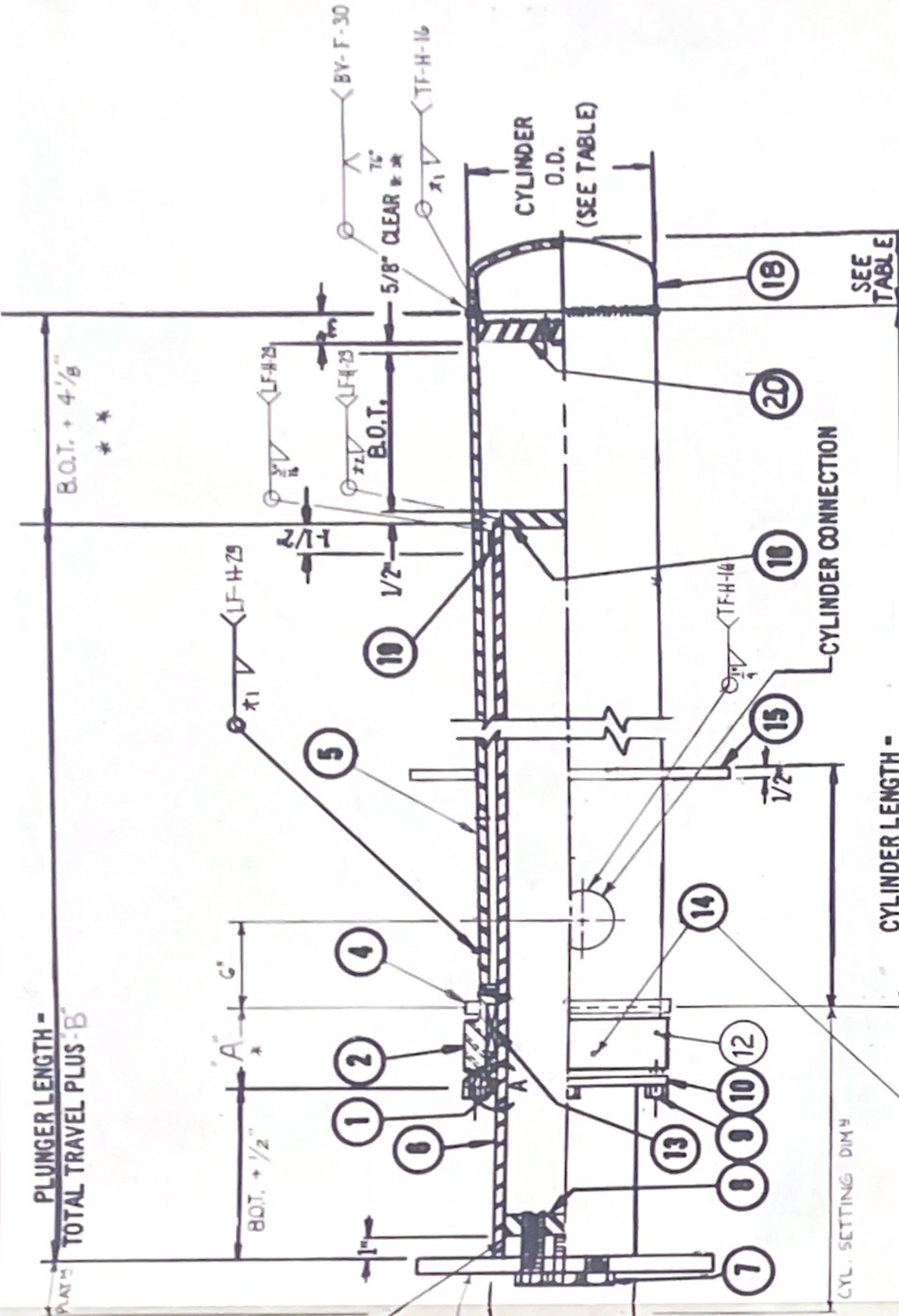
TRAVEL: _____
 TOP% _____
 BOTT %r _____
 TOTAL TRAV: _____



PIT BRACKET

PLUNGER O.D. (SEE TABLE)

PLATEN PLATE



WELD SIZE DATA

CYLINDER WALL THICKNESS A ₁	PLUNGER WALL THICKNESS X ₂	SCH 40	SCH 80
1/4"	1/4"	1"	1 1/2"
3/8"	3/8"	1 1/4"	1 3/4"
1/2"	1/2"	1 1/2"	2"
5/8"	5/8"	1 3/4"	2 1/4"
3/4"	3/4"	2"	2 1/2"
7/8"	7/8"	2 1/4"	2 3/4"
1"	1"	2 1/2"	3"

* INCLUDES 1/4" PIPE SEPARATION
 ** CALCULATED WITH A 4 1/2" PLUNGER HEAD
 THIS DIMS INCREASES WITH A LARGER HEAD

OUTSIDE DIMENSION TABLE

ASSEMBLY SIZE	PLUNGER O.D.	CYLINDER O.D.	ITEM NO. 18 CAP DEPTH
3-15/16"	3.960"	6-5/8"	3-1/2"
4-1/2"	4.460	8-5/8"	4"
5-1/2"	5.520	10-3/4"	5"
5-3/4"	5.720		
6-1/2"	6.590		
7-1/2"	7.470		
8-1/2"	8.570		

CYL. SETTING DIM'S

SECTION A-A

CYLINDER LENGTH - TOTAL TRAVEL PLUS 6-1/8

NOTE: AIR BLEEDER LOCATED IN STUFFING BOX FOR 3 3/4", 4-1/2", 5-1/2", 5-3/4", 7-1/2", 8-1/2" & 9-1/2" LOCATED IN CYLINDER WALL 1" BELOW BOTTOM OF VICTAULIC GROOVE. DRILL & TAP 1/4" N.P.T. HOLE.

MONTGOMERY ELEVATOR COMPANY

HYDRAULIC DIVISION

SINGLE SECTION JACK ASSEMBLY STANDARD CYLINDER

DRWG. NO. 14B-2123 B

REVISED PT BRACKETS
 MADE 3% REPAIRS
 85-7-19 WRS A-82784
 80-9-29 WRS A-82784
 80-6-9 WRS A-82784
 REDED # B CHART
 4 NOTES REMOVED
 ITEM # 17 (SUPPORTING B)

Item	Description	Page No.	Item	Description	Page No.	Item	Description	Page No.	Item	Description	Page No.
20	Safety Plate	P-21050	43280			43280			43281		
19	Plunger End - Ring	P-21050	40226			40228			40230		
18	Cylinder End - Bottom	P-21050	43287			43288			43289		
16	Plunger End - Bottom	P-21050	50303			50313			50328		
15	Pit Brackets	P-21050	81568			81569			81570		
14	Air Bleed Pipe Plug	P-21050	41471			41471			41471		
13	Round Rod Packing Set	P-21050	P-7500			P-7502			P-7503		
12	Pipe Plug	P-21050	1/4" NPT			1/4" NPT			1/4" NPT		
11	"0"-Ring	P-21050	82714			82781			82788		
9	Hex Hd Cap Screw 1-3/4" Long	P-21050	1/2-13 UNC			1/2-13 UNC			1/2-13 UNC		
8	Plunger End - Top	P-21050	50305			50310			50329		
7	Hex Hd Cap Screw 3" Long	P-21050	3/4-10 UNC			3/4-10 UNC			3/4-10 UNC		
6	Plunger Section	P-21050	41949-40			42779-55			41952-75		
5	Cylinder Section	P-21050	82768-66			82768-86			82768-107		
4	Victaulic Coupling	P-21050	20877-G			20877-H			20877-J		
2	Stuffing Box	P-21050	A-82775			A-82780			A-82785		
1	Wiper Ring	P-21050	33057-1			33057-2			33057-3		
	Description		3-15/16"-SCH 80			4-1/2"-SCH 40			5-1/2"-SCH 40		
	Bill of Material		P-21050			P-21058			P-21060		
			P-21049			P-21059			P-21080		
			P-21058			P-21080			P-21081		
			P-21058			P-21080			P-21082		
			P-21058			P-21080			P-21083		
			P-21058			P-21080			P-21084		
			P-21058			P-21080			P-21085		
			P-21058			P-21080			P-21086		
			P-21058			P-21080			P-21087		
			P-21058			P-21080			P-21088		
			P-21058			P-21080			P-21089		
			P-21058			P-21080			P-21090		
			P-21058			P-21080			P-21091		
			P-21058			P-21080			P-21092		
			P-21058			P-21080			P-21093		
			P-21058			P-21080			P-21094		
			P-21058			P-21080			P-21095		
			P-21058			P-21080			P-21096		
			P-21058			P-21080			P-21097		
			P-21058			P-21080			P-21098		
			P-21058			P-21080			P-21099		
			P-21058			P-21080			P-21100		
			P-21058			P-21080			P-21101		
			P-21058			P-21080			P-21102		
			P-21058			P-21080			P-21103		
			P-21058			P-21080			P-21104		
			P-21058			P-21080			P-21105		
			P-21058			P-21080			P-21106		
			P-21058			P-21080			P-21107		
			P-21058			P-21080			P-21108		
			P-21058			P-21080			P-21109		
			P-21058			P-21080			P-21110		
			P-21058			P-21080			P-21111		
			P-21058			P-21080			P-21112		
			P-21058			P-21080			P-21113		
			P-21058			P-21080			P-21114		
			P-21058			P-21080			P-21115		
			P-21058			P-21080			P-21116		
			P-21058			P-21080			P-21117		
			P-21058			P-21080			P-21118		
			P-21058			P-21080			P-21119		
			P-21058			P-21080			P-21120		
			P-21058			P-21080			P-21121		
			P-21058			P-21080			P-21122		
			P-21058			P-21080			P-21123		
			P-21058			P-21080			P-21124		
			P-21058			P-21080			P-21125		
			P-21058			P-21080			P-21126		
			P-21058			P-21080			P-21127		
			P-21058			P-21080			P-21128		
			P-21058			P-21080			P-21129		
			P-21058			P-21080			P-21130		
			P-21058			P-21080			P-21131		
			P-21058			P-21080			P-21132		
			P-21058			P-21080			P-21133		
			P-21058			P-21080			P-21134		
			P-21058			P-21080			P-21135		
			P-21058			P-21080			P-21136		
			P-21058			P-21080			P-21137		
			P-21058			P-21080			P-21138		
			P-21058			P-21080			P-21139		
			P-21058			P-21080			P-21140		
			P-21058			P-21080			P-21141		
			P-21058			P-21080			P-21142		
			P-21058			P-21080			P-21143		
			P-21058			P-21080			P-21144		
			P-21058			P-21080			P-21145		
			P-21058			P-21080			P-21146		
			P-21058			P-21080			P-21147		
			P-21058			P-21080			P-21148		
			P-21058			P-21080			P-21149		
			P-21058			P-21080			P-21150		
			P-21058			P-21080			P-21151		
			P-21058			P-21080			P-21152		
			P-21058			P-21080			P-21153		
			P-21058			P-21080			P-21154		
			P-21058			P-21080			P-21155		
			P-21058			P-21080			P-21156		
			P-21058			P-21080			P-21157		
			P-21058			P-21080			P-21158		
			P-21058			P-21080			P-21159		
			P-21058			P-21080			P-21160		
			P-21058			P-21080			P-21161		
			P-21058			P-21080			P-21162		
			P-21058			P-21080			P-21163		
			P-21058			P-21080			P-21164		
			P-21058			P-21080			P-21165		
			P-21058			P-21080			P-21166		
			P-21058			P-21080			P-21167		
			P-21058			P-21080			P-21168		
			P-21058			P-21080			P-21169		
			P-21058			P-21080			P-21170		
			P-21058			P-21080			P-21171		
			P-21058			P-21080			P-21172		
			P-21058			P-21080			P-21173		
			P-21058			P-21080			P-21174		
			P-21058			P-21080			P-21175		
			P-21058								

114B-5632 -

B.O.M. REFERENCES

P-21435
P-21436
P-21437
P-21438
P-21439
P-21440
P-21441

SPM MODEL	"A"	"B"	"C"	"D"	"E"	ASSY WT
H1500	57 ³ / ₄	60	59 ⁷ / ₈	2	24 ³ / ₈	110 #
H2000	75 ³ / ₄	53	52 ⁷ / ₈	2	21 ³ / ₈	134 #
H2000H	71 ³ / ₄	60	59 ⁷ / ₈	2	24 ³ / ₈	131 #
H2500	83 ³ / ₄	60	59 ⁷ / ₈	2	24 ³ / ₈	149 #
H3000	83 ³ / ₄	66	65 ⁷ / ₈	3	26 ³ / ₈	181 #
H3500	83 ³ / ₄	74	73 ⁷ / ₈	3	28 ³ / ₈	184 #
H4000	67 ³ / ₄	104	103 ⁷ / ₈	5	39 ³ / ₈	215 #

FINISH NOTES:

See CONTRACT LISTING

SPI#
SPEC# MS-

INCH DIMENSIONS
OVERALL ASSEMBLY TOLERANCES SHOWN. SEE INDIVIDUAL ITEM DRAWINGS FOR COMPONENT TOLERANCES.

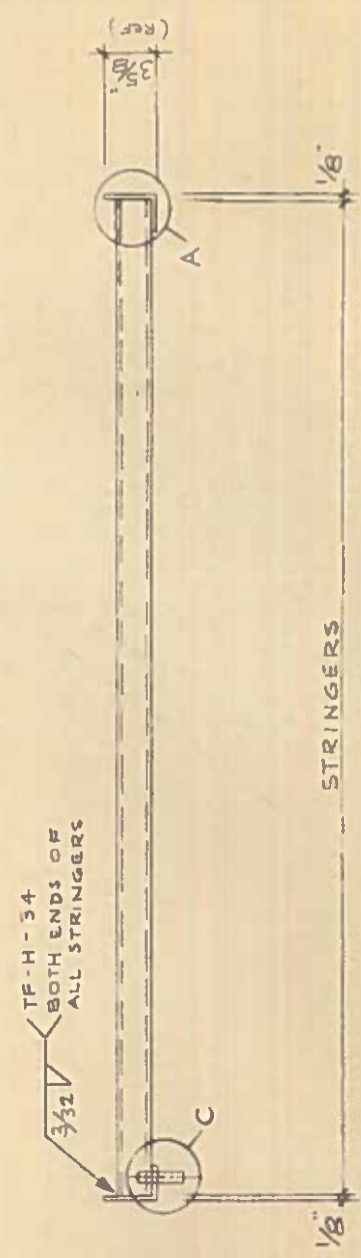
THE INFORMATION HEREON IS PROPRIETARY TO MONTGOMERY ELEVATOR COMPANY AND ITS SUBSIDIARIES. WITHOUT WRITTEN PERMISSION, ANY COPYING, TRANSMITTAL TO OTHERS, AND ANY USE EXCEPT THAT FOR WHICH IT IS LOANED, IS PROHIBITED.

1	84-9-14	DATE	CH'K	APP'D	TIMED
0	83-9-8	DATE	CH'K	APP'D	TIMED
REV		DATE	CH'K	APP'D	TIMED
DRAWN	SPD				AFORG 3-82

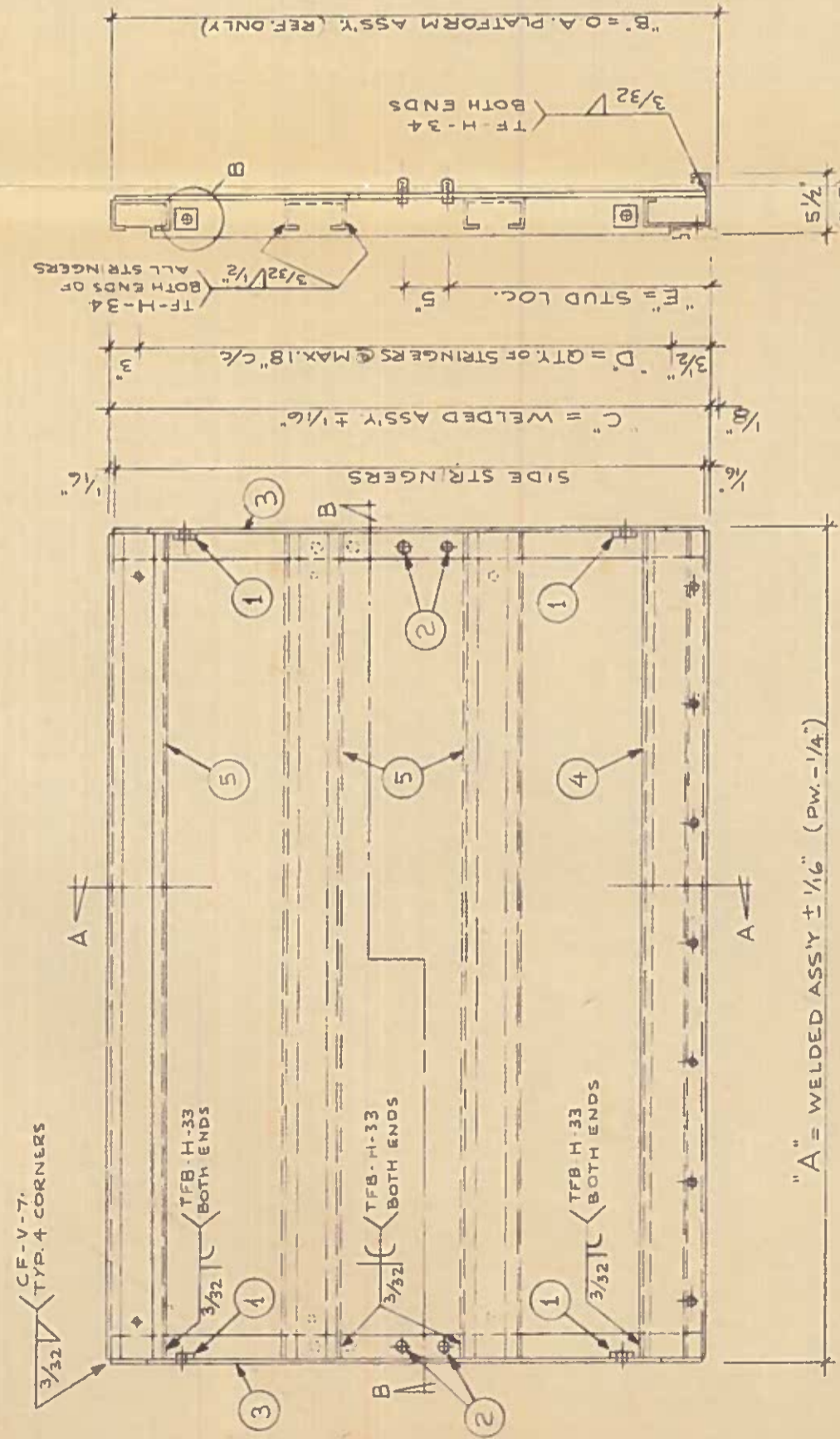
MONTGOMERY ELEVATOR CO. Moline, IL 61285

ASSY NAME
PLATFORM-WELDED SUB-ASSY.

USED
SPM-H-ALL
114B-5632

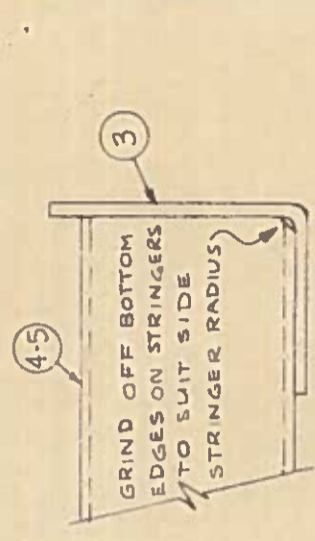


SECTION B-B

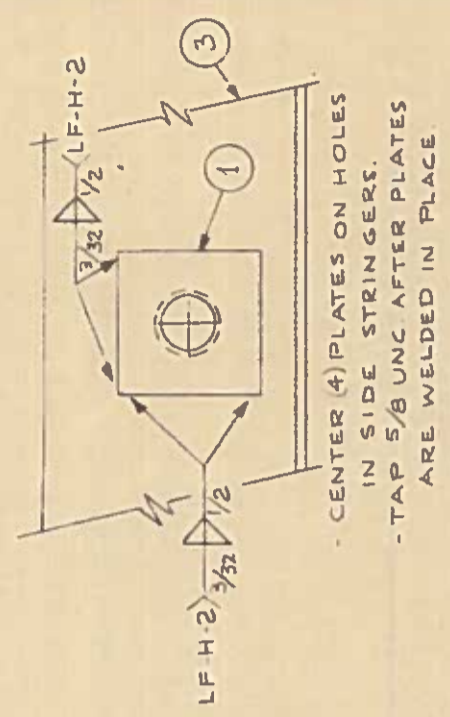


PLAN VIEW

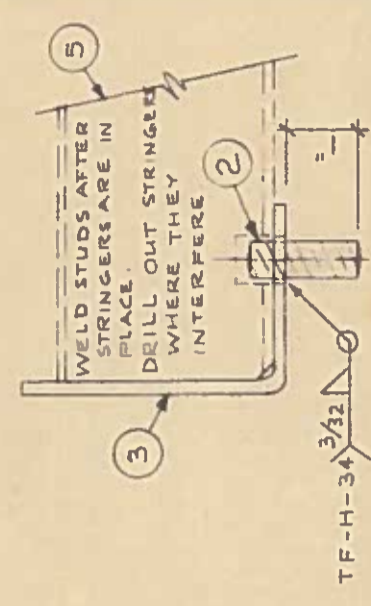
SECTION A-A



DETAIL A



DETAIL B



DETAIL C

14B-5631 -

SPM MODEL	PW	SIZE	ASSY WT.
H 1500	58	7"	192#
H 2000	76	7"	217#
H 2000H	72	7"	212#
H 2500	84	7"	227#
H 3000	84	9"	248#
H 3500	84	9"	248#
H 4000	68	9"	223#

FINISH NOTES:
SEE CONTRACT LISTING

SPI#
SPEC# MS-
INCH DIMENSIONS
OVERALL ASSEMBLY TOLERANCES SHOWN. SEE INDIVIDUAL ITEM DRAWINGS FOR COMPONENT TOLERANCES.

THE INFORMATION HEREON IS PROPRIETARY TO MONTGOMERY ELEVATOR COMPANY AND ITS SUBSIDIARIES. WITHOUT WRITTEN PERMISSION, ANY COPYING, TRANSMITTAL TO OTHERS AND ANY USE EXCEPT THAT FOR WHICH IT IS LOANED, IS PROHIBITED.

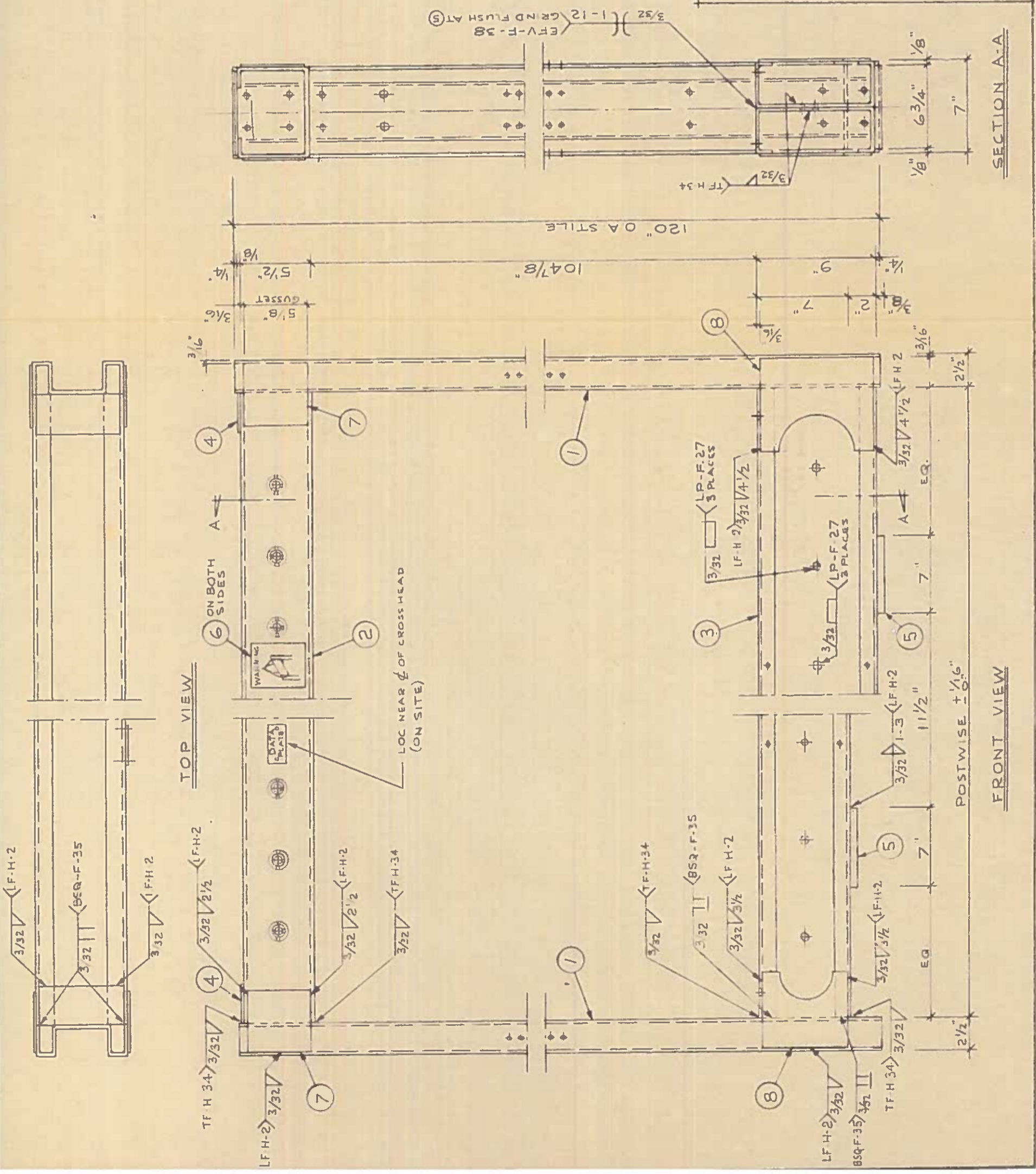
REV	DATE	CHK	APP'D
2	84-9-14	B	
1	84-6-18	WZ	
0	83-9-6		

DRAWN
MONTGOMERY ELEVATOR CO. MOLINE, IL 61265

ASSY NAME
SLING-WELDED ASSY.

SPM-H-ALL (WH. CAGE)
14B-5631 -
NOT B

NOTE: SLING ASSY WELDING SEQUENCE
STEP 1: WELD ④ TO ②
STEP 2: WELD ② X ③ TOGETHER
STEP 3: WELD ⑤ TO ③ ASSY.
STEP 4: WELD COMPLETE ASSY.
NOTE THAT STILE ENDS ARE NOT SYMMETRICAL



PART - 84329 - ***

INCH DIMENSIONS
TOLERANCE

WT. = 4.3 #/FT.
SPEC & MATERIAL DESC
14 GA. STAINLESS STEEL HRS.
F_y = 36 KSI

SPI#
THE INFORMATION HEREON IS
PROPRIETARY TO MONTGOMERY
ELEVATOR COMPANY AND ITS
SUBSIDIARIES. WITHOUT WRIT-
TEN PERMISSION, ANY COPYING,
TRANSMITTAL TO OTHERS AND
ANY USE EXCEPT THAT FOR
WHICH IT IS LOANED, IS
PROHIBITED.

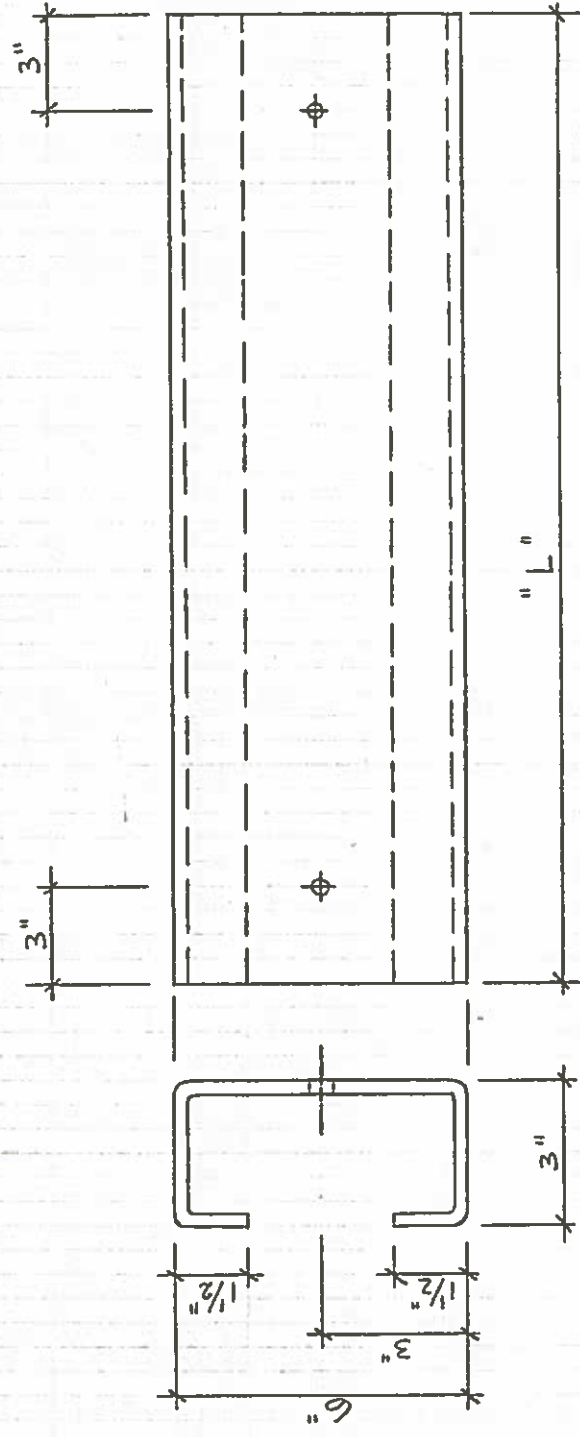
REV	DATE	CH'K	APP'D	FILED
0	83-9-7			
1	84-10-12			

**MONTGOMERY
ELEVATOR CO.
MOLINE, IL
61265**

PART NAME
CHANNEL - PLATFORM
STRINGER

USED
SPM-H-ALL

PART
- 84329 - ***



BASE N°	DASH N°	SPM-H	"L" =
84329	001	H1500	57 1/2"
"	002	H2000	75 1/2"
"	003	H2000H	71 1/2"
"	004	H2509/3500	83 1/2"
"	005	H4000	67 1/2"

- NOTES:
- MAINTAIN 90° CORNERS
 - INSIDE RADIUS = MAT. THICKNESS
 - 1/4" DIA. HOLES

-84293-

INCH DIMENSIONS
TOLERANCE

WT = 2.5.3 #

SPEC & MATERIAL DESC

16 GA. SATIN-EGAF HRS.

Fy = 36 KSI

SPI#

THE INFORMATION HEREON IS PROPRIETARY TO MONTGOMERY ELEVATOR COMPANY AND ITS SUBSIDIARIES. WITHOUT WRITTEN PERMISSION, ANY COPYING, TRANSMITTAL TO OTHERS AND ANY USE EXCEPT THAT FOR WHICH IT IS LOANED, IS PROHIBITED.

1 84-10-12 NS

0 83-9-2

REV

DATE

CH'K

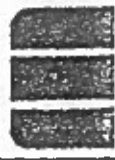
APP'D

DRAWN

PFORMA

3-82

FILMED



MONTGOMERY
ELEVATOR CO.
MOLINE, IL
81285

PART NAME

CROSSHEAD-FORMED

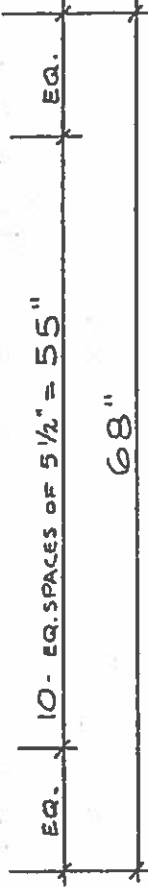
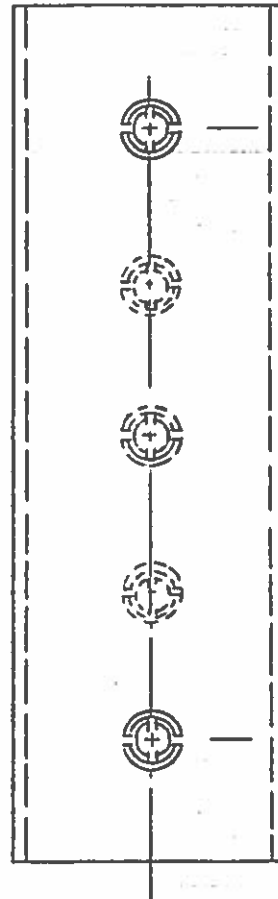
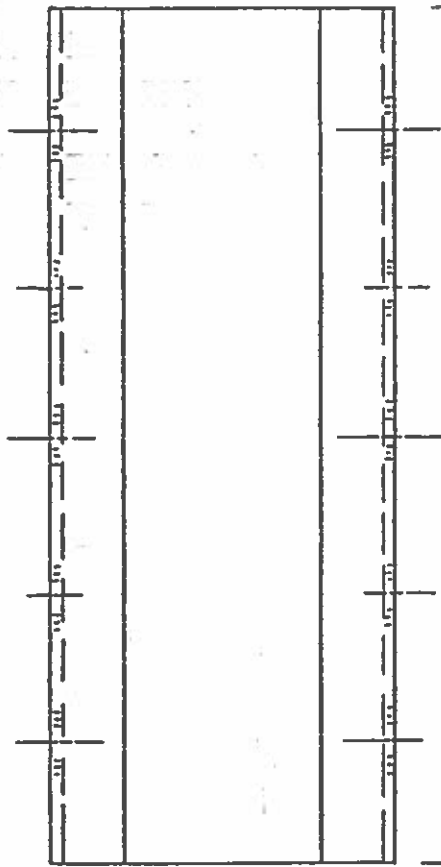
SPM-H4000

30T

3A

PART

-84293-



NOTES:

- MAINTAIN 90° CORNERS
- INSIDE RADIUS = MAT. THICKNESS
- COMBINATION 1/2" - 3/4" - 1" KNOCKOUTS (22)

PART - 84287 -

INCH DIMENSIONS

TOLERANCE

SHOWN

WT = 4.5 #

SPEC# & MATERIAL DESC

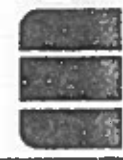
14 GA ~~STEEL~~ HRS.

Fy = 36 ksi

SPI#

THE INFORMATION HEREON IS PROPRIETARY TO MONTGOMERY ELEVATOR COMPANY AND ITS SUBSIDIARIES. WITHOUT WRITTEN PERMISSION, ANY COPYING, TRANSMITTAL TO OTHERS AND ANY USE EXCEPT THAT FOR WHICH IT IS LOANED, IS PROHIBITED.

REV	DATE	CH'K	APP'D	FILMED
2	85-2-8	<i>RL</i>		
1	84-8-27	<i>RL</i>		
0	83-9-2			
DRAWN <i>RL</i>				
			PFORMA	
			3-B2	



MONTGOMERY ELEVATOR CO. Moline, IL 61265

PART NAME

STILE - FORMED

USED

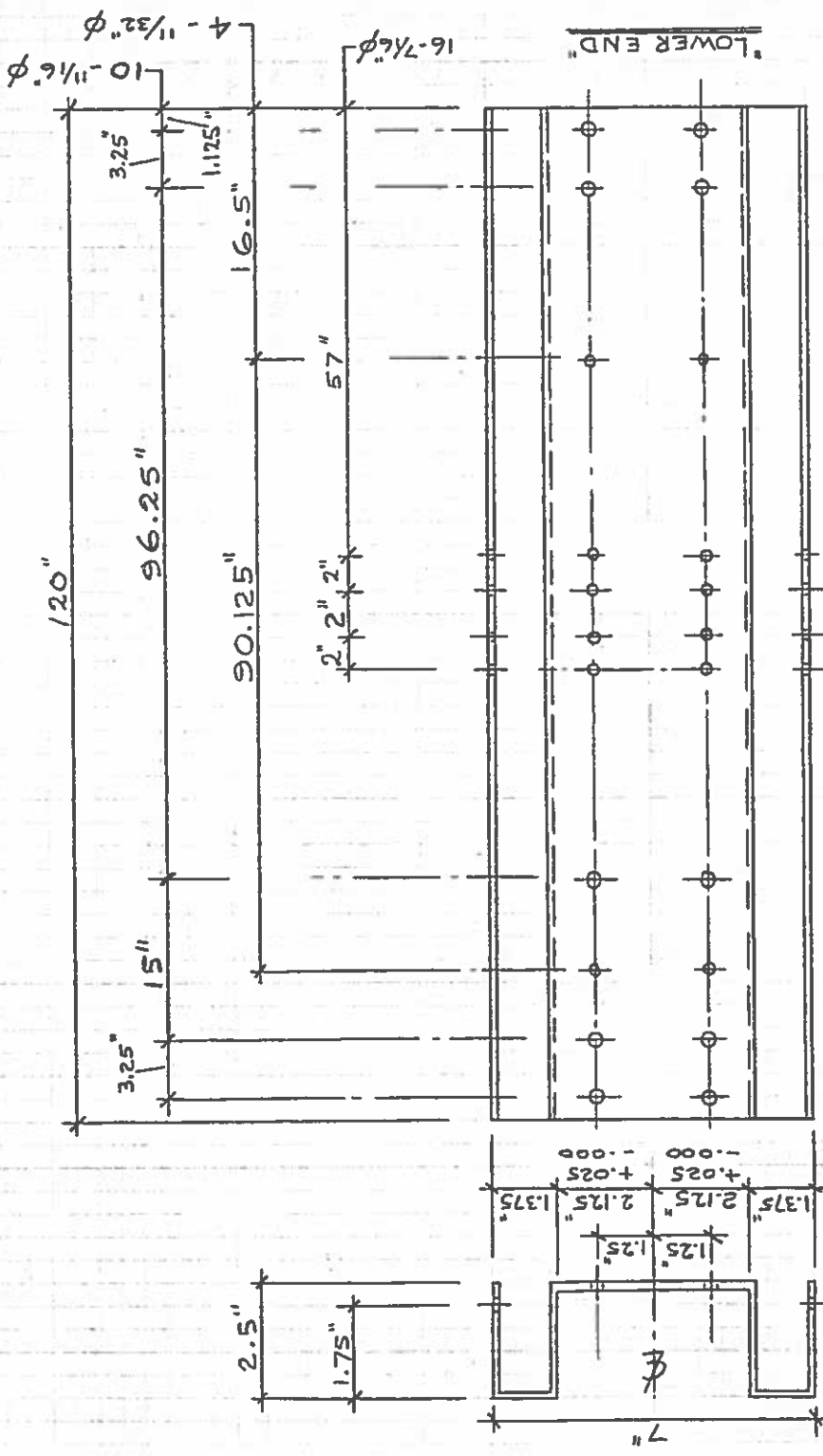
SPM-H-ALL

120T

A

PART

- 84287 -



NOTES:

- MAINTAIN 90° CORNERS
- INSIDE RADII = MAT. THICKNESS